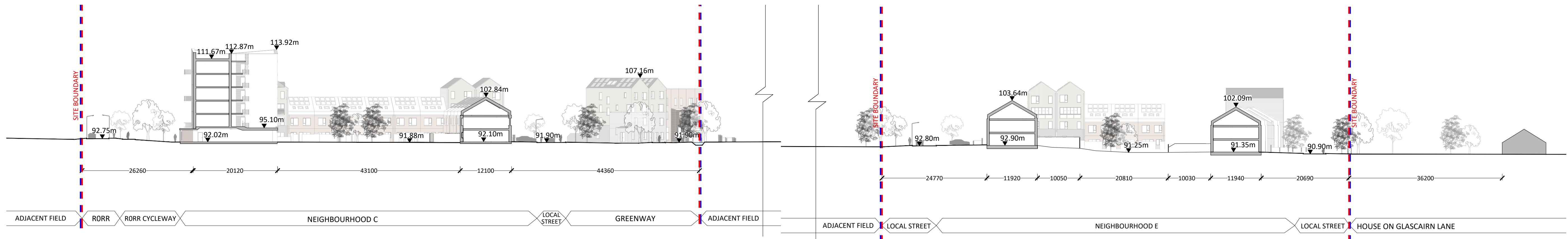


All dimensions to be checked on site. Figured dimensions take preference over scaled dimensions. Any errors or discrepancies to be reported to the Architects. This drawing may not be edited or modified by the recipient.

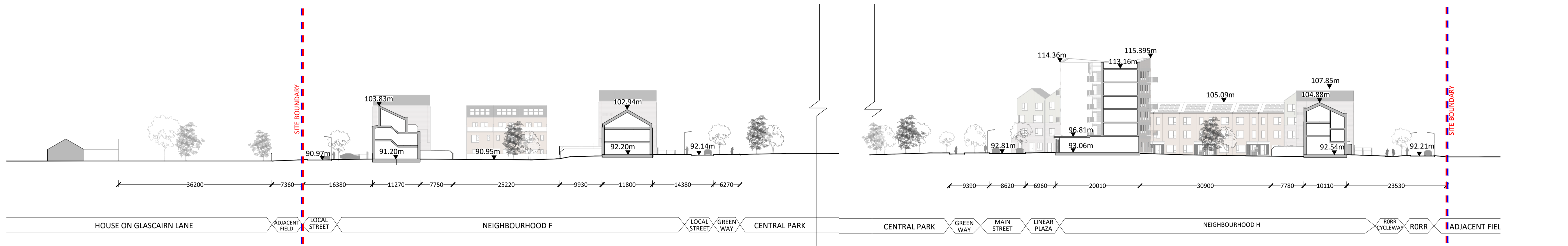
Copyright and ownership of this drawing is vested in RKD Architects, whose prior written consent is required for its use, reproduction or for publication to any third party. All rights reserved by the law of copyright and by international copyright conventions are reserved to RKD Architects and may be protected by court proceedings for damages and/or injunctions and costs. RKD Architects' Quality Management Systems are independently certified to ISO 9001:2015.

Notes

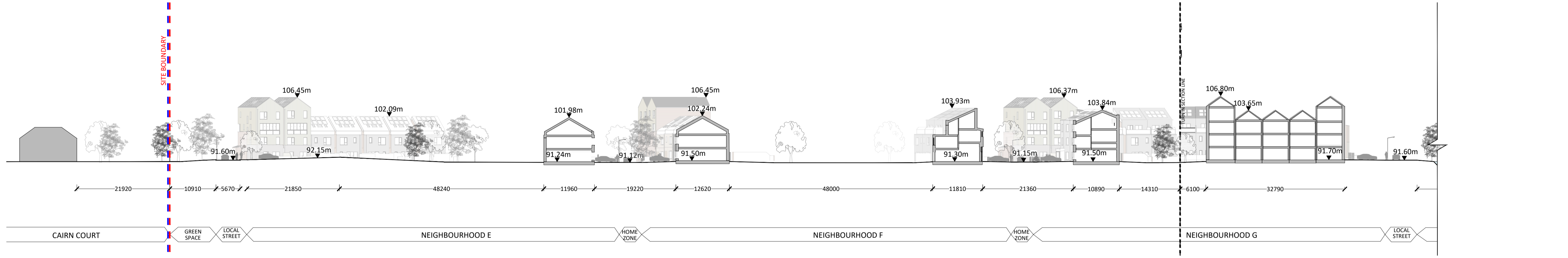
- - - SITE BOUNDARY
- - - BEO OWNERSHIP BOUNDARY



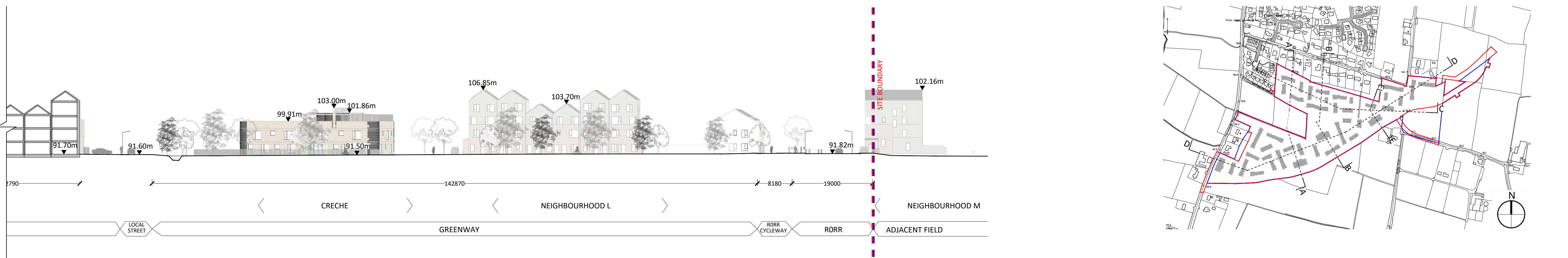
**A** SECTION AA  
1:500



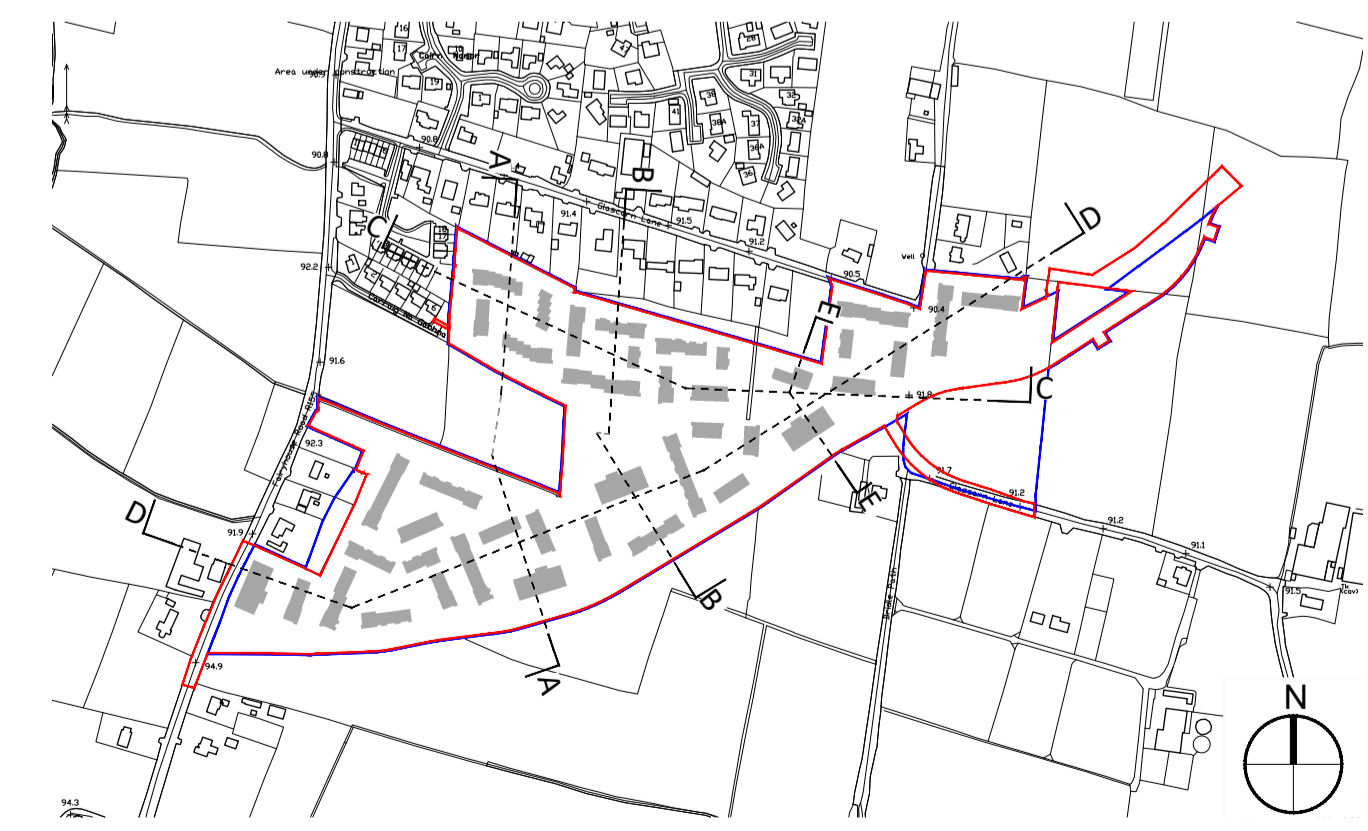
**B** SECTION BB  
1:500



**C1** SECTION CC  
1:500



**C2** SECTION CC (CONTINUED)  
1:500



CONTIGUOUS SECTIONS  
KEY PLAN

1	MAY 2022	DC	PLANNING SUBMISSION
REV	DATE	CHK BY	DESCRIPTION

BEO PROPERTIES LTD.

STATUS **PLANNING**

PROJECT RATOATH SOUTH SHD

PROJECT ADDRESS RATOATH SOUTH, CO. MEATH

DWG TITLE PROPOSED CONTIGUOUS SECTIONS SHEET 1

DWG NO 21088-RKD-ZZ-ZZ-DR-A-1202

REV	P1	PROJECT NO	21088	SCALE	1:500@A1
DATE	MAY-2022	DRN	JB	CHK	DC

